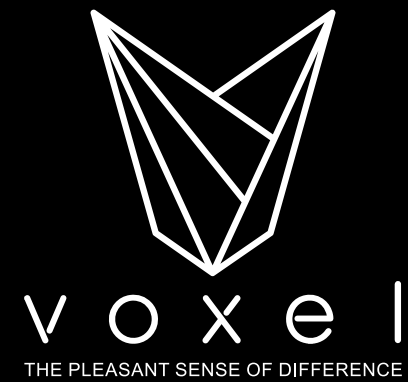


**ADDRESS:** UNIT.15, NO.7, MARVDASHT STREET, ASHRAFI ESFAHANI EXPRESSWAY, TEHRAN, IRAN

**PHONE NUMBER:** +982144264194  
**SALES REPRESENTATIVE:** +989126103380  
**CUSTOM PROJECTS & ARCHITECTURAL DESIGN:** +989124724202  
**EMAIL:** [INFO@VOXEL-CO.COM](mailto:INFO@VOXEL-CO.COM)  
**WEBSITE:** [WWW.VOXEL-CO.COM](http://WWW.VOXEL-CO.COM)





v o x e l



**ISFAHAN STORE**  
CUSTOM PROJECT



**IRANMALL**  
CUSTOM PROJECT

# ABOUT US

VOXEL Group focuses on designing and producing new products in the field of interior and exterior architecture. The first phase focuses on the production of luxury interior wall coverings, which include the presentation of manufactured products as well as the implementation of custom projects. In the second phase, new ideas in the field of exterior architecture of the building floor and facades surfaces are created by designing and producing concrete products. GFRG facades are another area of activity in this phase. Voxel's main goal is to reduce the production cost and time by using modern and advanced materials to produce high quality products. In addition to offering products, Voxel also offers services such as design, research and development and provides corporation at all levels of employer, consultant and architect.

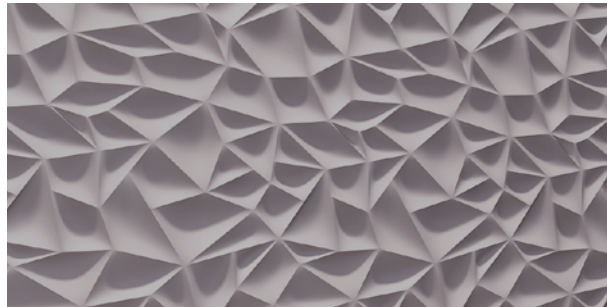


**ALIREZA MOHAMMADIAN**  
MASTER OF ARCHITECTURAL TECHNOLOGY  
FOUNDER

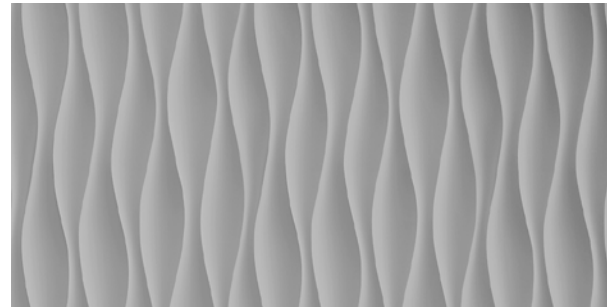


**HASSAN AFSHIN**  
MASTER OF ARCHITECTURE  
FOUNDER

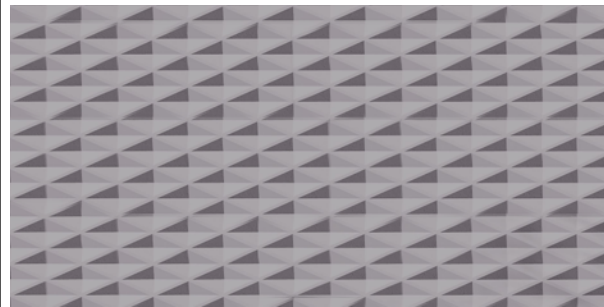
# INDEX



**01**  
MODELS | 10



**02**  
INTERIORS | 16



**03**  
EXTERIORS | 54



**04**  
CUSTOM | 66

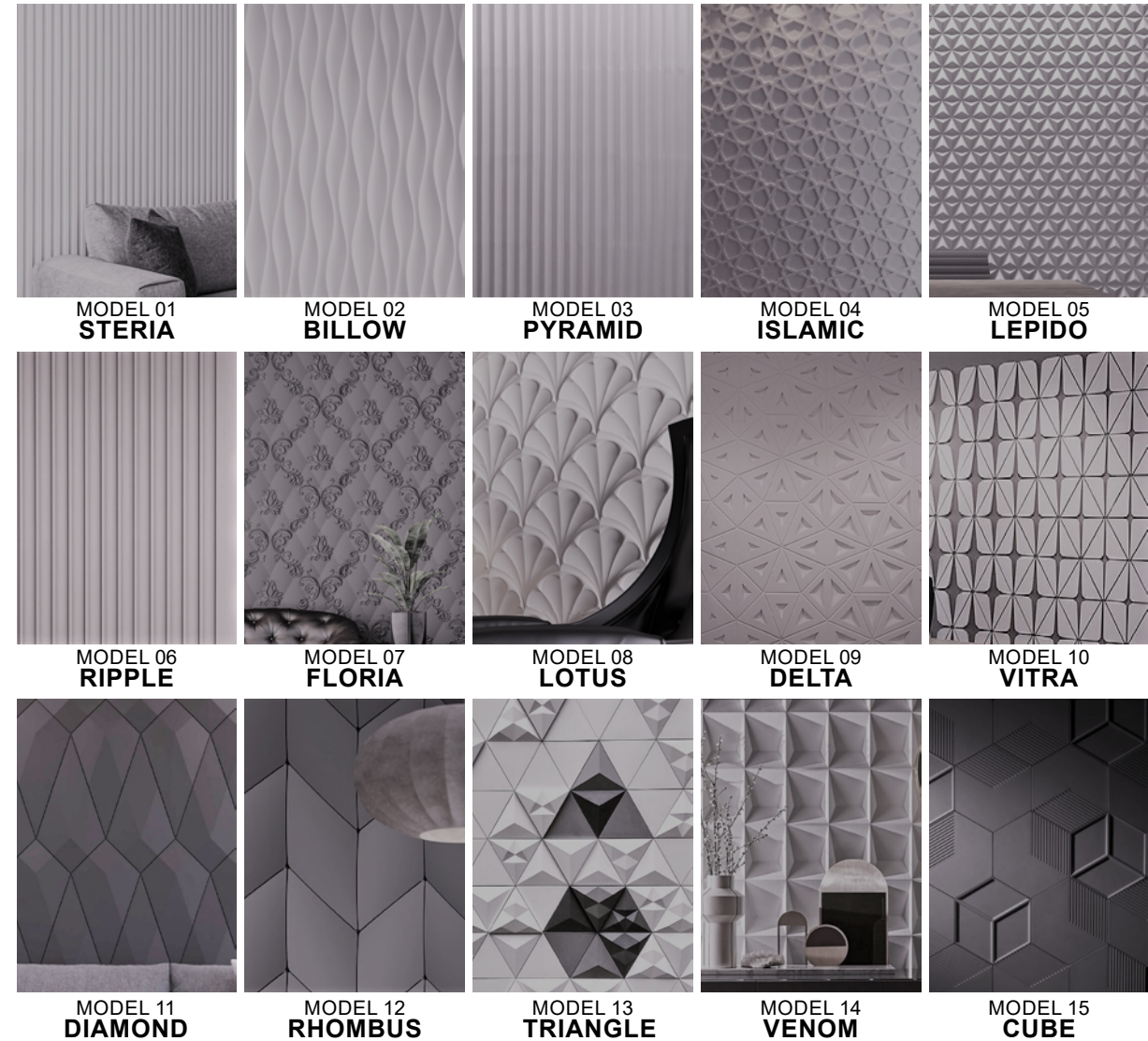
# MODELS

## SAMPLES



# INTERIOR MODELS

GFRG COMPOSITE



MODEL 01  
**STERIA**

MODEL 02  
**BILLOW**

MODEL 03  
**PYRAMID**

MODEL 04  
**ISLAMIC**

MODEL 05  
**LEPIDO**

MODEL 06  
**RIPPLE**

MODEL 07  
**FLORIA**

MODEL 08  
**LOTUS**

MODEL 09  
**DELTA**

MODEL 10  
**VITRA**

MODEL 11  
**DIAMOND**

MODEL 12  
**RHOMBUS**

MODEL 13  
**TRIANGLE**

MODEL 14  
**VENOM**

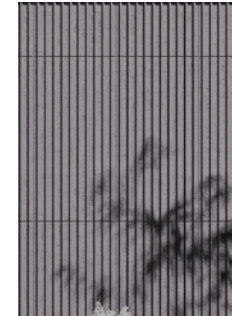
MODEL 15  
**CUBE**



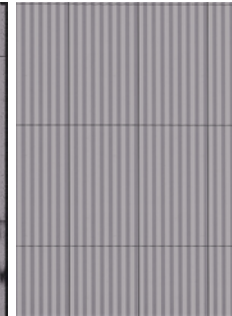
# EXTERIOR MODELS

## CONCRETE

# CUSTOM PROJECT



MODEL 16  
TEMPUS



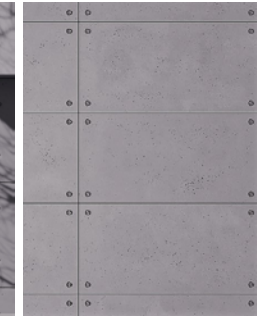
MODEL 17  
PALAMEDS



MODEL 18  
RIBBED



MODEL 19  
PRISM



MODEL 20  
EXPOSE



PROJECT 01  
STERIA



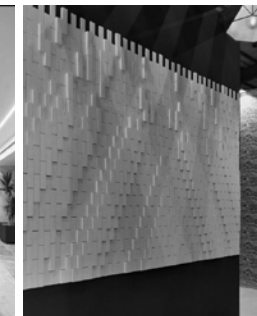
PROJECT 02  
DAY HOSPITAL



PROJECT 03  
ISFAHAN STORE



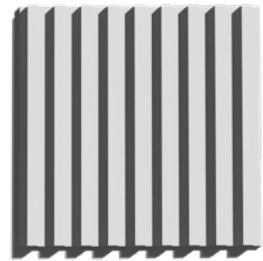
PROJECT 04  
SHARIF OFFICE



PROJECT 05  
CARPET PAVILION

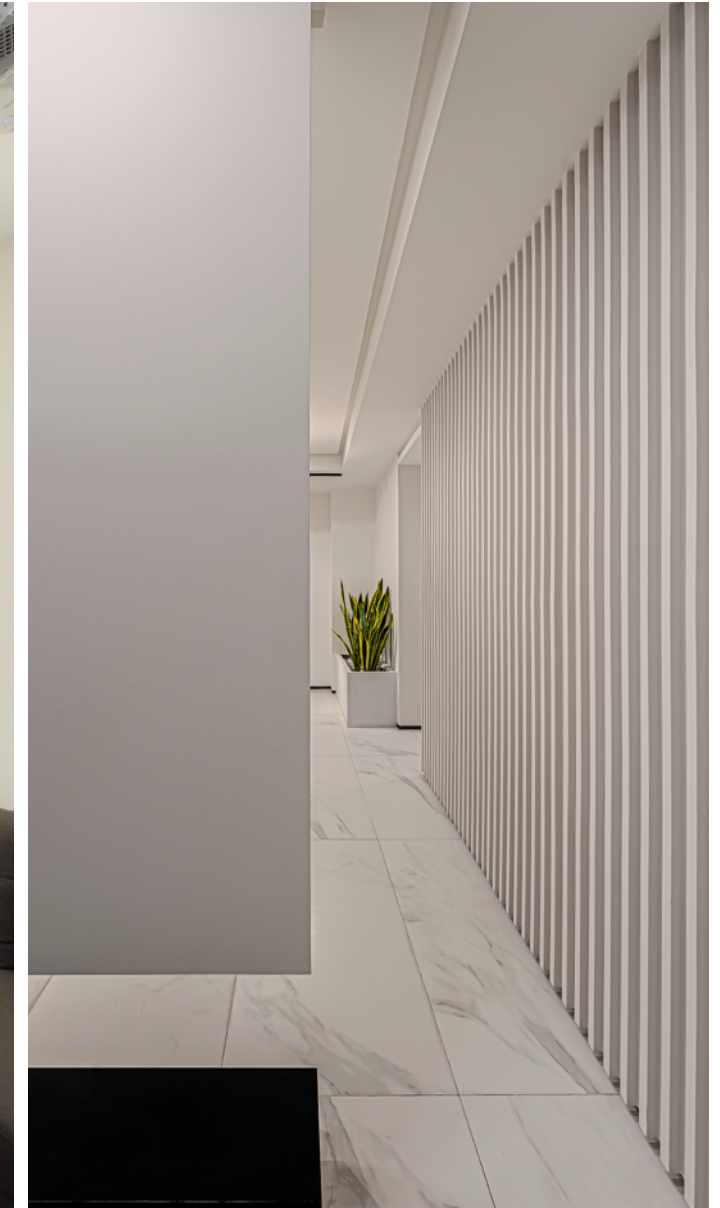
**INTERIOR**  
GFRG COMPOSITE

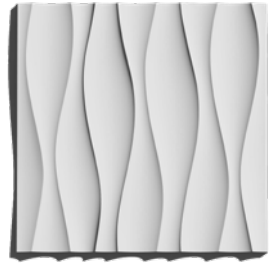




MODEL 01  
**STERIA**

Steria model has a sense of simplicity with a grooved and stripes sections which creates an attractive bright shadows. Its vertical lines make the place atmosphere more extensive and higher.

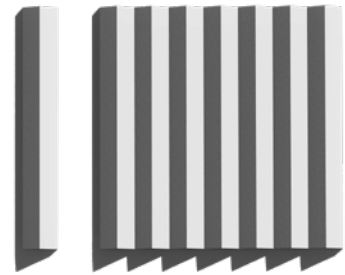




MODEL 02  
**BILLOW**

Billow model has continuous soft waves which creates an atmosphere with a sense of calmness and brings light refraction for its surroundings.

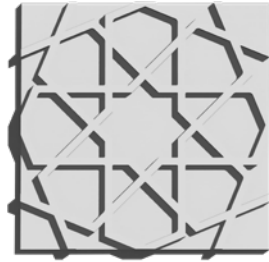




MODEL 03  
**PYRAMID**

Pyramid model has a pyramidal cross section and give the place atmosphere an attractive and bold effect. Its broken edges have come forward as if the the space is out of prosaic uniformity.

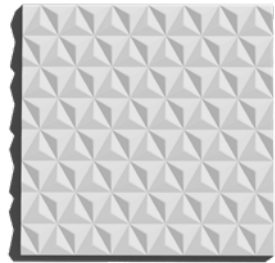




MODEL 04  
**ISLAMIC**

Islamic models are derived from Iranian geometric Gereh-Chini patterns. Besides visual attractiveness, they have the ability to produce in custom patterns.

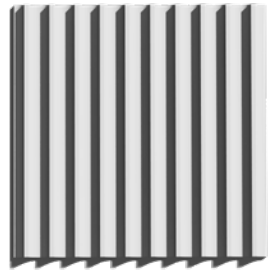




MODEL 05  
**LEPIDO**

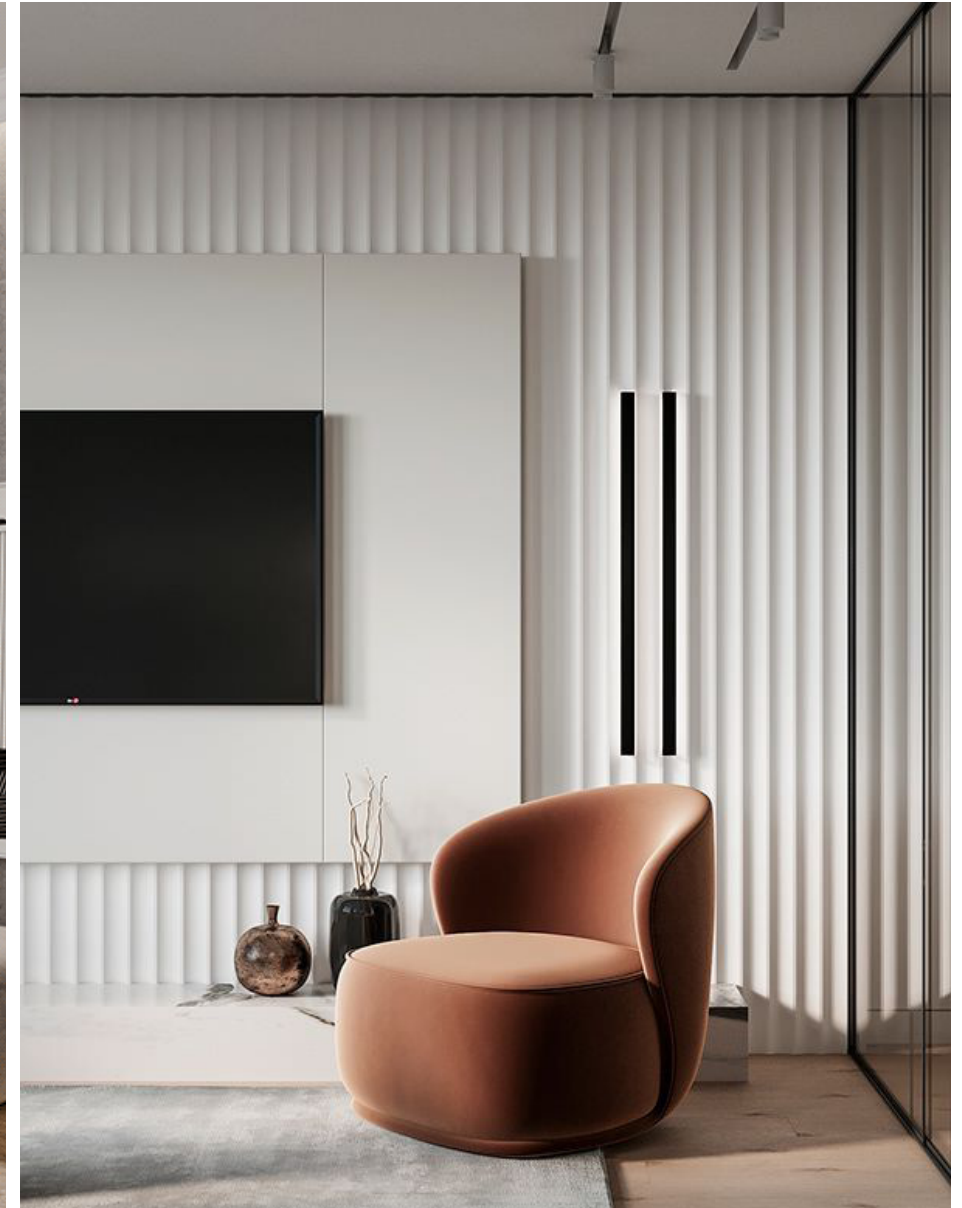
Lepido, a consensus of six-pointed stars, brings unique details to the monotonous spaces.





MODEL 06  
**RIPPLE**

Ripple model brings a refraction of light to the surrounding space with a cross-section of semicircles sitting inward. Its soft indent make the place look deep and unfathomable.



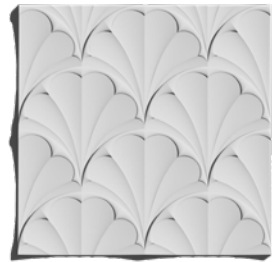




MODEL 07  
**FLORYA**

Floria model has a base of diamond and covered with classic flower patterns. It brings the space sense of glory and magnitude.

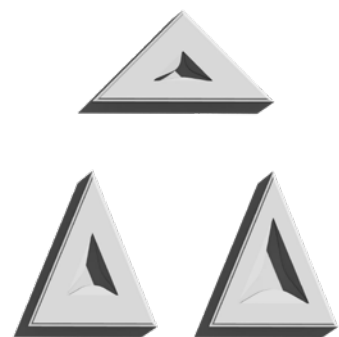




MODEL 08  
**LOTUS**

Lotus model is derived from curved leaves in a dense context with classic sensation.





MODEL 09  
**DELTA**

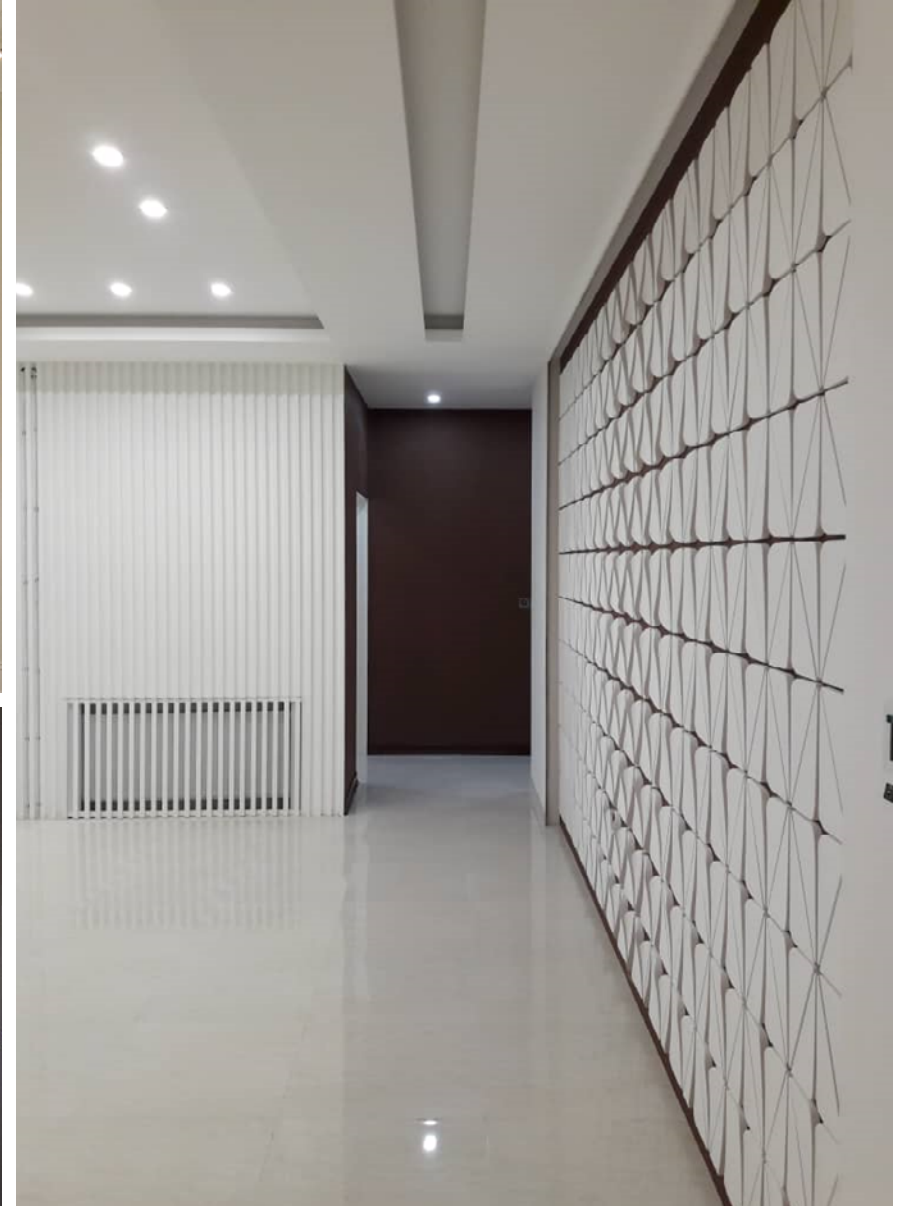
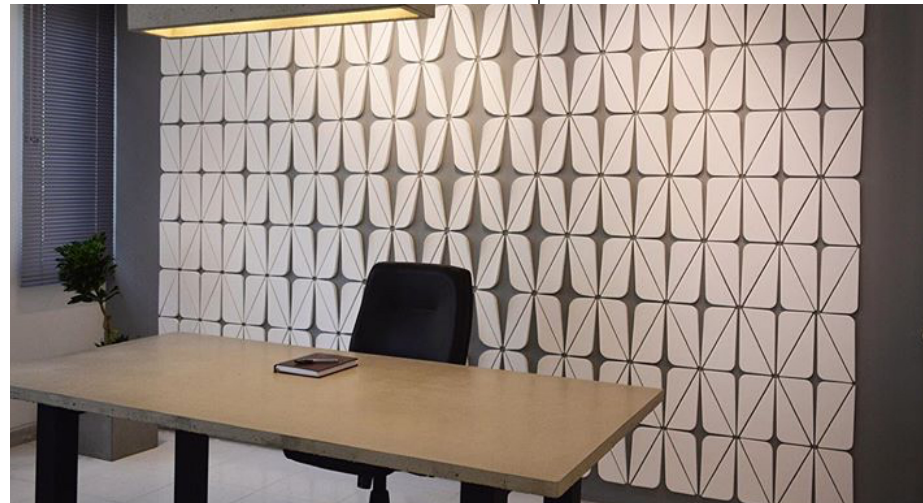
Delta, a hollow triangular schema, creates a parametric and interactive pattern. This pattern make the place atmosphere alive.





MODEL 10  
**VITRA**

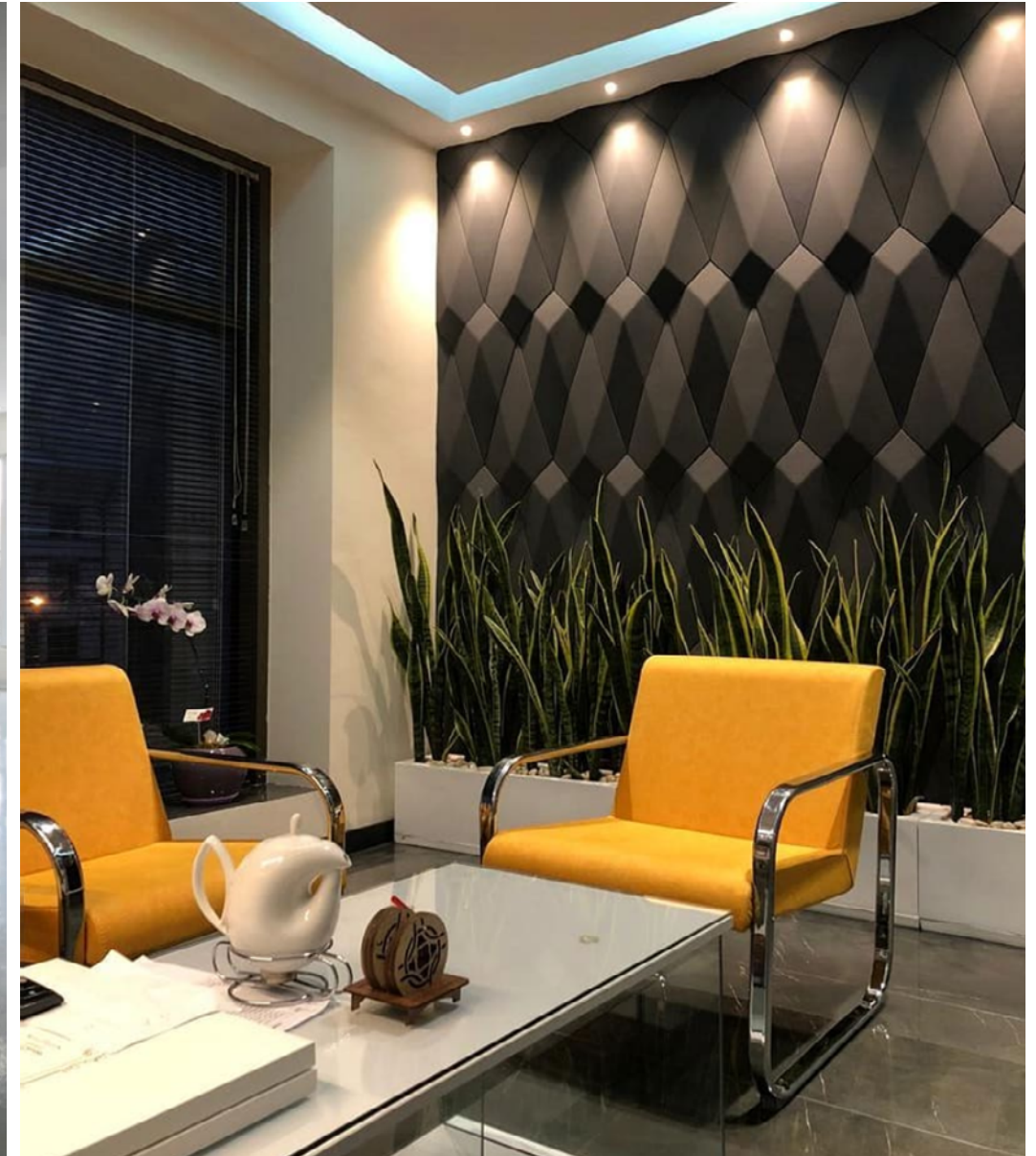
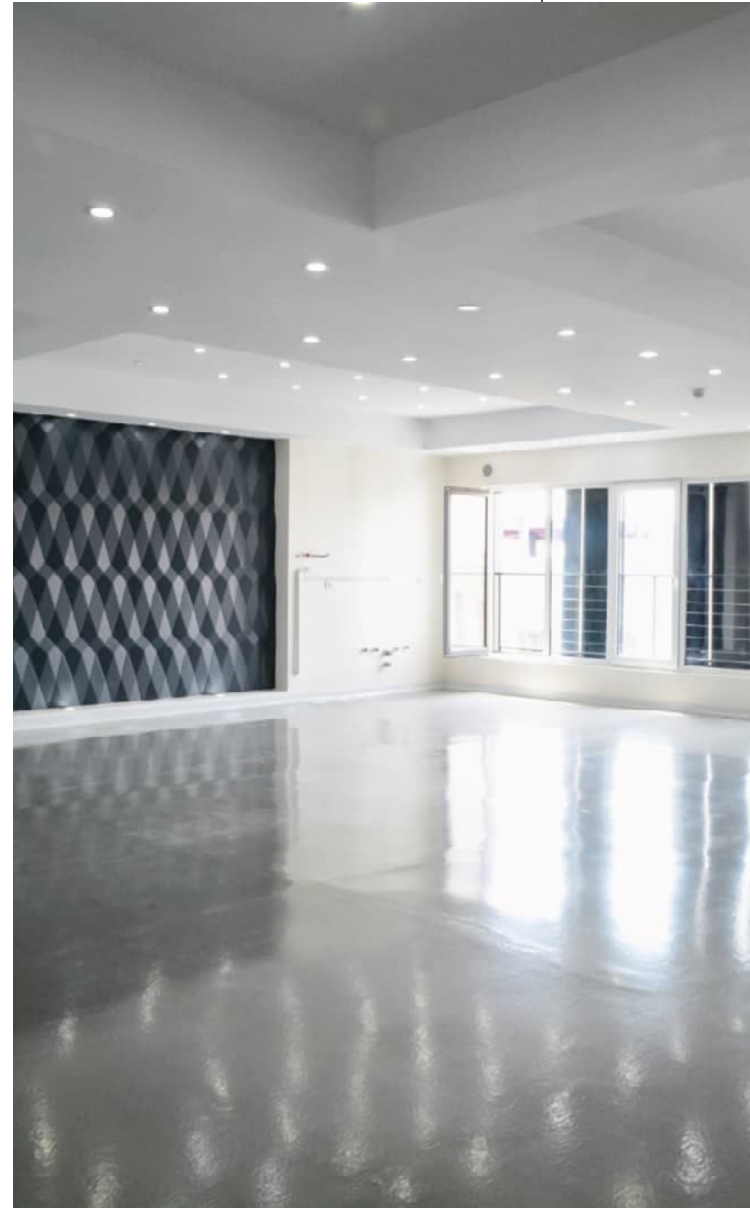
Vitra is a unique pattern in parametric arrangement with four specific segments. This model has a capability to assemble in custom way.





MODEL 11  
**DIAMOND**

Diamond, an irregular quadrangle, reminiscent of fine diamonds which make the atmosphere fancy and imaginary.

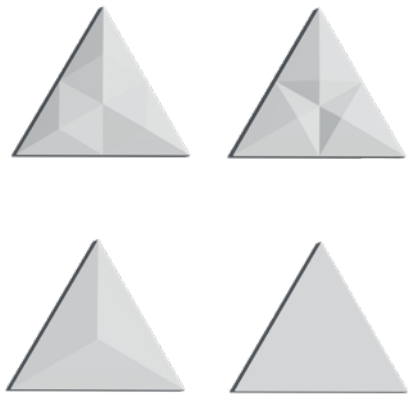




MODEL 12  
**RHOMBUS**

Rhombus has equilateral sides with soft edges. This pattern gives the place clam sensation.





MODEL 13  
**TRIANGLE**

Tringle has three equilateral sides in four different shapes.  
This pattern Spreads irregularly on the wall surface



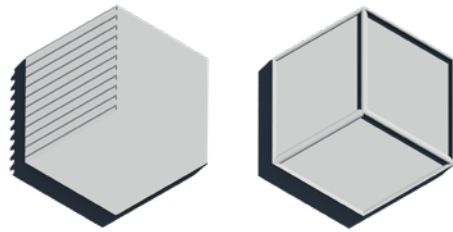


MODEL 14  
**VENOM**

Venom is rectangular modules with collide plates which Gives dimension to the space by creating shadows and half shadows.







MODEL 15  
**CUBE**

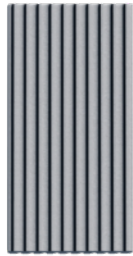
Cube has hexagonal geometric patterns and induce a sense of dynamism into the place. This model with distinct parts have modern style and give the atmosphere meaning of uniformity.



# EXTERIOR

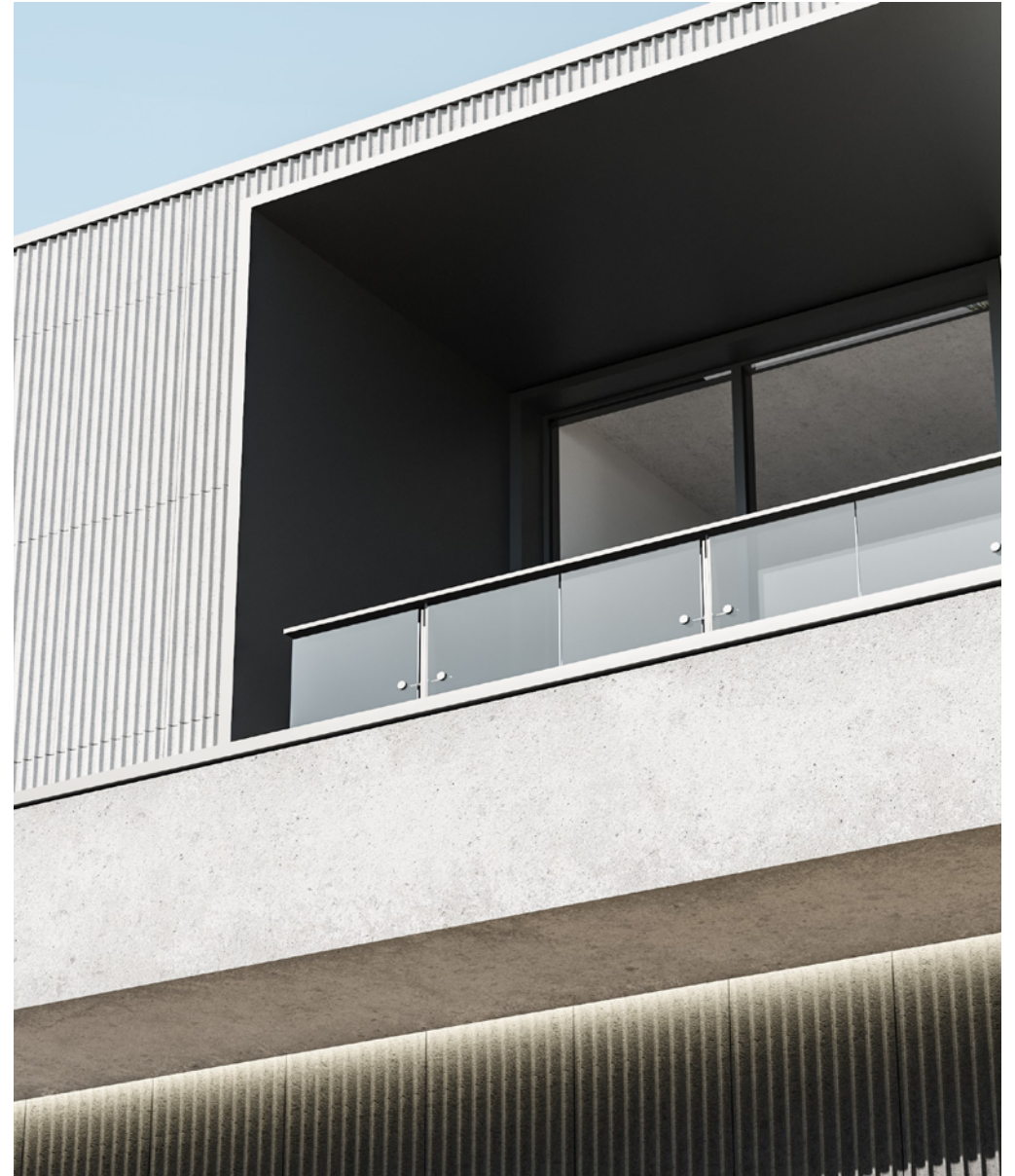
CONCRETE





MODEL 16  
**TEMPUS**

Tempus is a semicircular surfaces with sharp separators that give the facade different surfaces and textures.

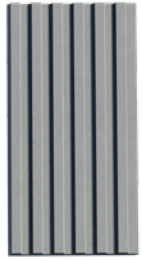




MODEL 17  
**PALAMEDES**

Palamedes has a Broken and pyramidal surfaces that is suitable for repetitive and uniform shadows.

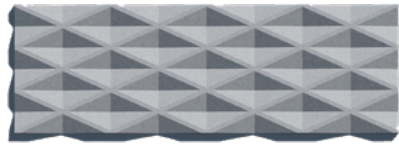




MODEL 18  
**RIBBED**

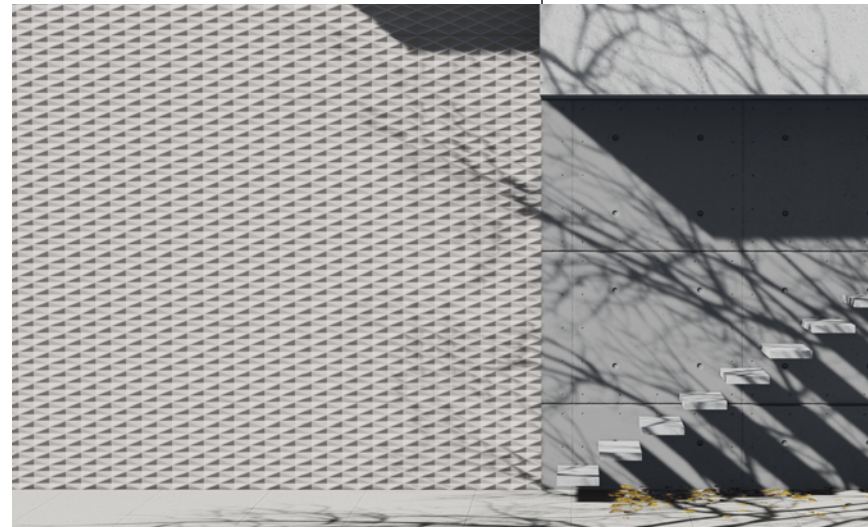
Ribbed is a Striped surfaces created by narrow cubes.





MODEL 19  
**PRISM**

Prism is well-patterned rhombuses that are in dynamic interaction with each other.





MODEL 20  
**EXPOSE**

Simplicity is always beautiful. This pattern Can be used on all different surfaces like facade and floor with different dimension.



# COLORS OF CONCRETE



A1



B1



C1



D1



E1



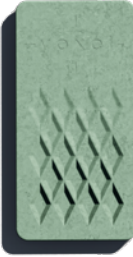
F2



G2



H2



J3



K3



L3



M4



N4



O4



P4



R5



S5



T5



U6



V6



W6



X77



Z7

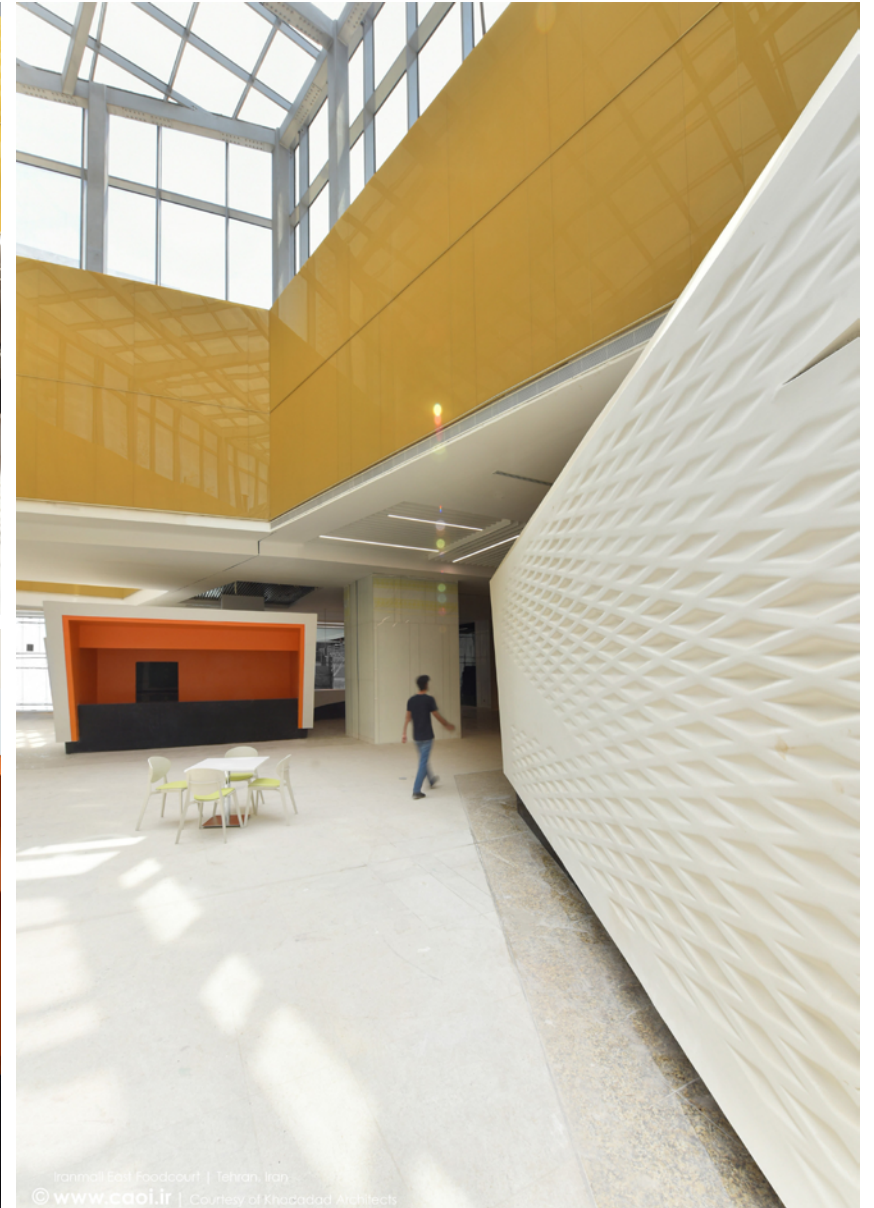




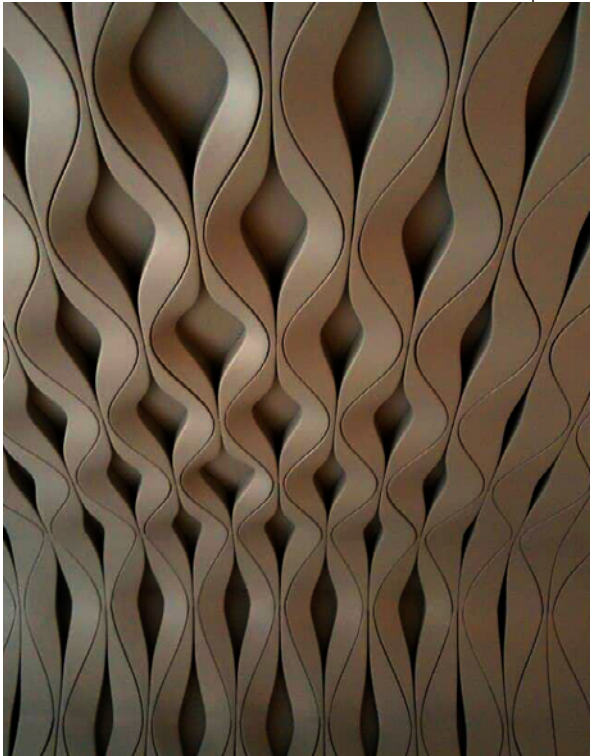
# CUSTOM PROJECTS



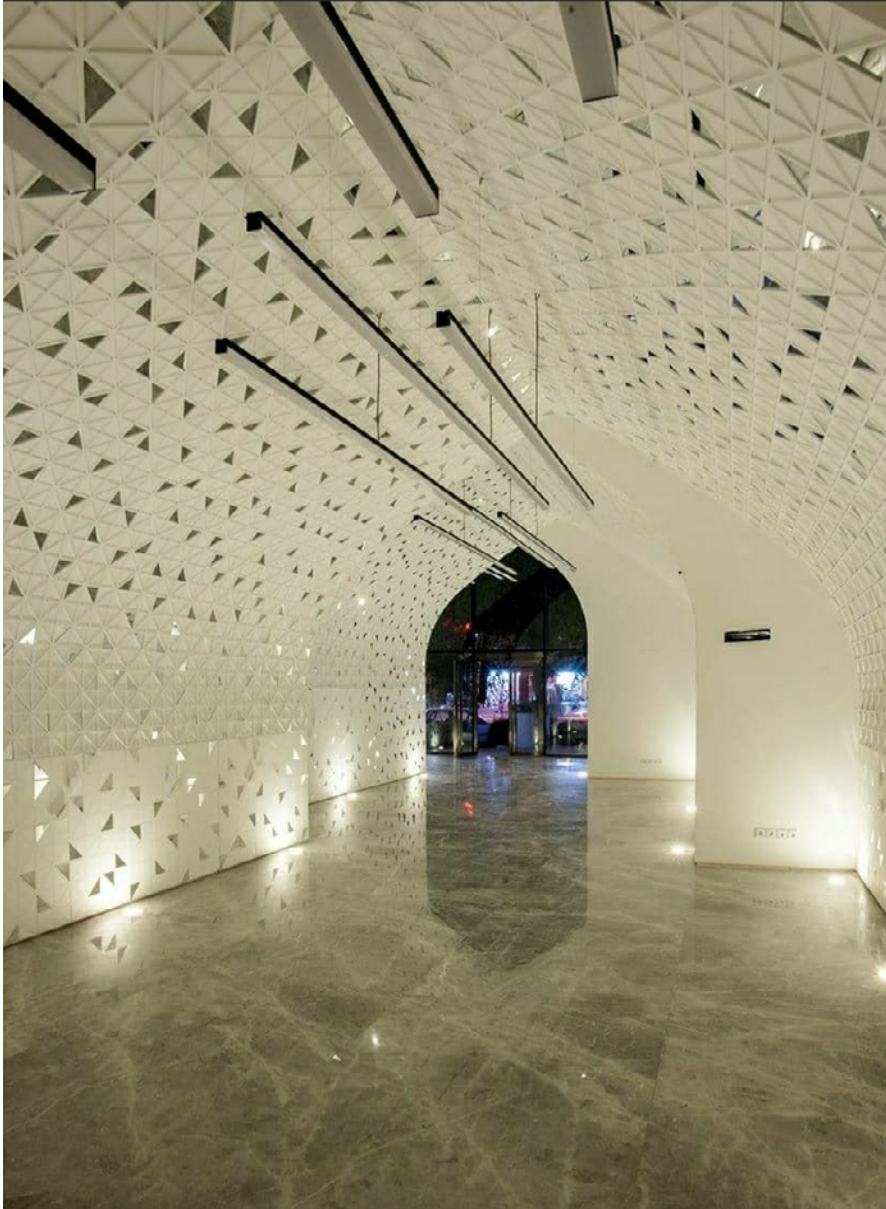
PROJECT 01  
**IRANMALL**



PROJECT 02  
**DAY HOSPITAL**



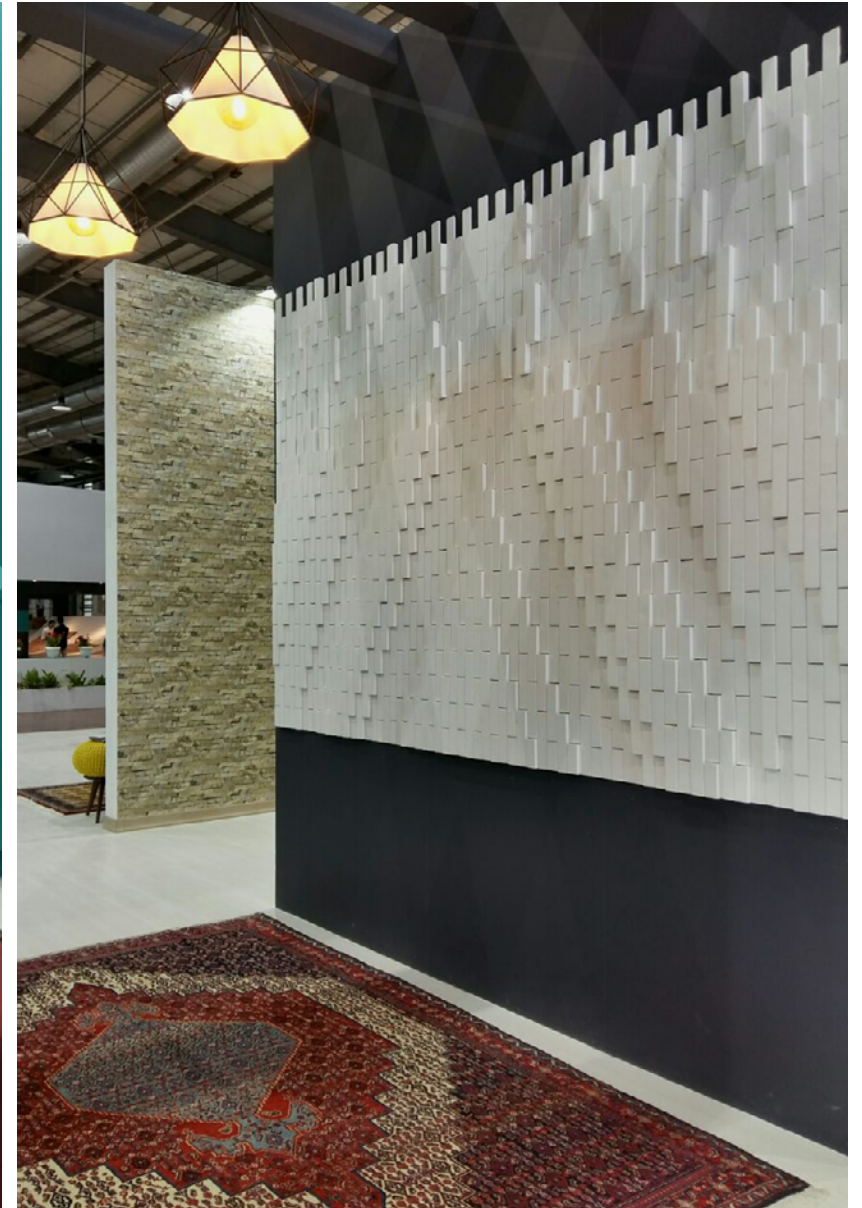
PROJECT 03  
**ISFAHAN STORE**



PROJECT 04  
**SHARIF OFFICE BUILDING**



PROJECT 05  
**CARPET PAVILION**



# INTERIOR MODELS

## DATA SHEET

MODEL	DIMENSION	THICKNESS
01. STERIA	60*60 CM	3.8 CM
02. BILLOW	60*60 CM	2.8 CM
03. PYRAMID	60*60 CM	4.0 CM
04. ISLAMIC	60*60 CM	2.2 CM
05. LEPIDO	60*60 CM	2.7 CM
06. RPPLE	60*60 CM	3.5 CM
07. FLORIA	60*60 CM	3.0 CM
08. LOTUS	60*60 CM	3.0 CM
09. DELTA	36 PIECES PER M <sup>2</sup>	3.0 CM
10. VITRA	72 PIECES PER M <sup>2</sup>	3.0 CM
11. DIAMOND	11 PIECES PER M <sup>2</sup>	3.0 CM
12. RHOMBUS	10 PIECES PER M <sup>2</sup>	3.0 CM
13. TRIANGLE	42 PIECES PER M <sup>2</sup>	3.0 CM
14. VENON	36 PIECES PER M <sup>2</sup>	4.0 CM
15. CUBE	36 PIECES PER M <sup>2</sup>	2.0 CM



# CONCRETE MODELS

## DATA SHEET

MODEL	DIMENSION	THICKNESS
16. TEMPUS	60*120 CM	3.5 CM
17. PALAMEDES	60*120 CM	4.0 CM
18. RIBBED	60*120 CM	5.0 CM
19. PRISM	30*90 CM	3.5 CM
20. EXPOSE	60*120 CM	3.0 CM

